

To stage
light
To design
space



MHZ PLEATED BLINDS | *new design*





New Structures Transparencies Textile Looks



MHZ PLEATED BLINDS

Textiles with a special character

With the new Pleated Blinds Collection, MHZ is embarking on a completely new path. Surprising structures, transparencies and effects - inspired from urban life and nature trends - are created as a result of our refined weave technology. A collection with extraordinary fabrics and special patterns unlike any before: MHZ Pleated Blinds - new design.

The new fabrics can stage light, design space and simultaneously - in combination with technology - provide flexible, adjustable sun protection.

The fabrics are largely woven and dyed in Germany and MHZ employees further process the fabrics into individual design elements. Made to measure and manual work characterize MHZ's production. This corresponds to the MHZ philosophy of strict quality control, short transport distances; harmlessness to health and resource efficient manufacturing. Almost all of the collection fabrics comply with the OEKO-TEX® Standard 100, which stands for harmlessness to health.

Take a tour through the pages of our new MHZ Pleated Blinds Collection and experience the melding of aesthetics and function.

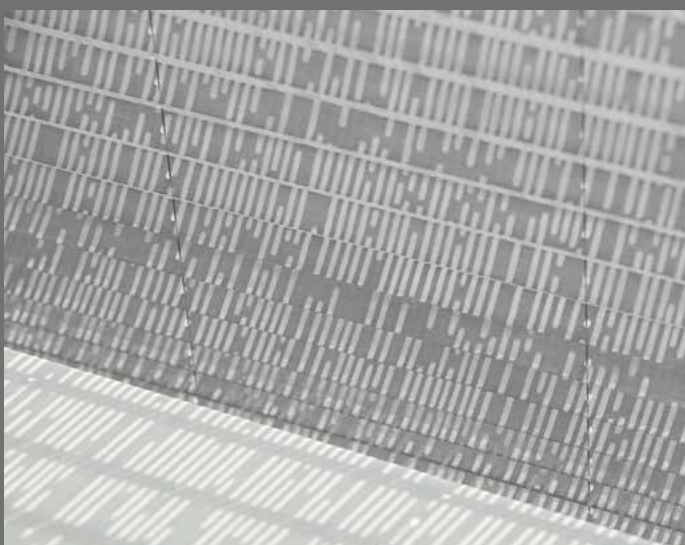
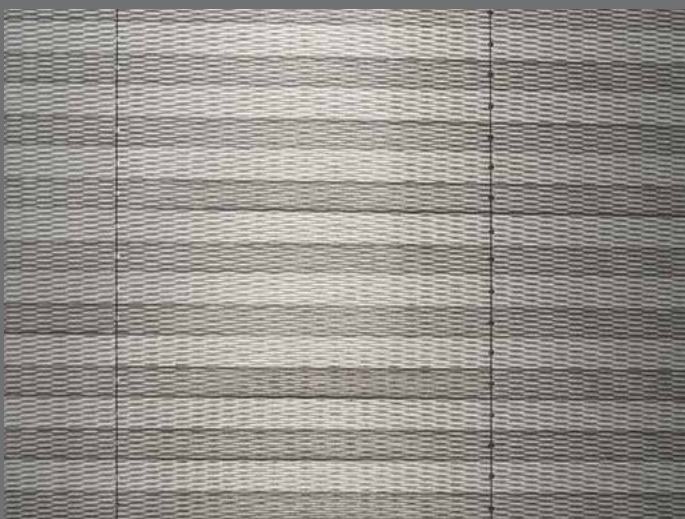


THE TRENDS

Urban Life:

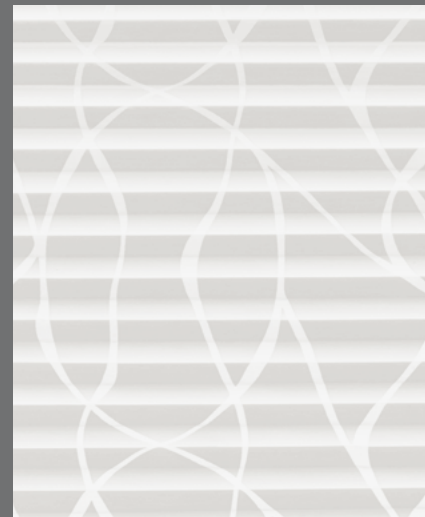
Grids, railings, straight lines, expressive shadows: The silhouettes of the city inspired the MHZ designers to create new fabrics types. Fascinating patterns have been created for every living space through vivid structures, and through opaque and transparent spaces.

4 |





Nature:
Bark, Tree Shadows,
Weave: The structures
in nature are lively and
three-dimensional. At
MHZ's own studio, these
impressions flowed into
the design of exclusive
patterns, that bring the
beauty of nature indoors
into your space.





Model	11-8220, taut
Blind fabric	LUCIA, 3-4438, anthracite
Installation	Window Clip

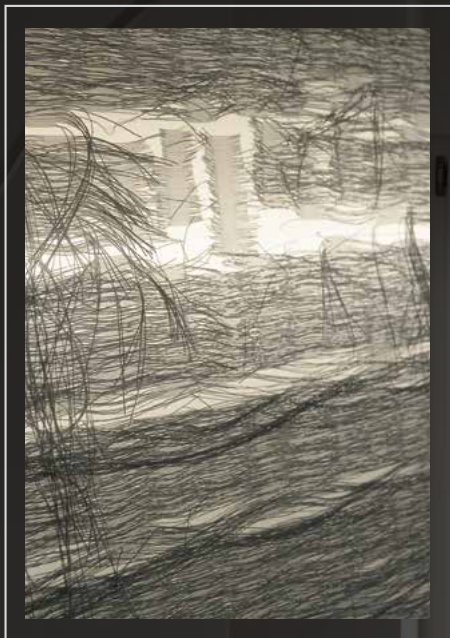


THE FASCINATING TEXTURE OF TREE
BARK IN ELEGANT TRANSPARENCY:
THE FABRIC LUCIA REINTERPRETS
NATURE FOR YOUR LIVING SPACE.

LUCIA is a Jacquard fabric with an irregular look - an
extravagant structure, bright - with a high degree of
transparency, giving the fabric a three-dimensional
appearance.



STINA Pattern



8 |

Inspired by modern home façades, the MHZ studio created the transparent Scherli fabric STINA with timeless graphic elements.

The distinctive feature is the refined production process, which highlights the pattern's effect.

In the small image, this process is illustrated on the weaving machine. Threads are cut out, to make the motif visible.

Model	11-8220, taut
Blind fabric	STINA, 3-4394, white
Installation	Window Clip





TRANSPARENT WAVES IN THE XIRA FABRIC CAST LIVELY LIGHT REFLECTIONS ON ITS SURROUNDINGS - A WONDERFUL INTERPLAY BETWEEN LIGHT AND SHADOW FILLS YOUR SPACE.

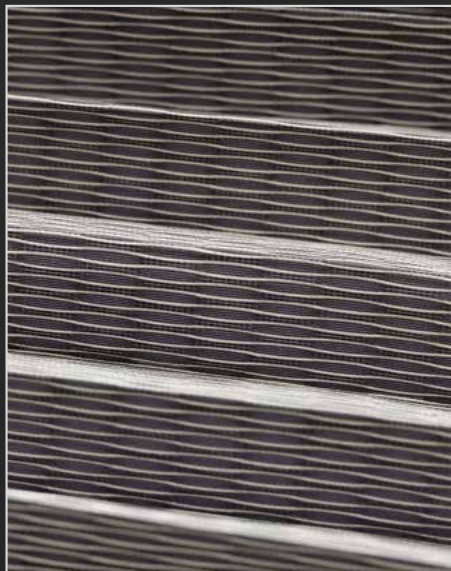
The lively XIRA wave pattern is produced through an elaborate burning-out process. Sunlight transfers light and shadow patterns onto the surfaces throughout your space.



Model	11-8220, taut
Blind fabric	XIRA, 4-4371, white
Installation	Window Clip



HUGO Pattern



Inspired by the urban world, HUGO fabric reflects the details of metal surfaces. The grid structure is attained through the interaction between fine anthracite and thick white weft threads.

Model	11-8220, taut
Blind fabric	HUGO, 3-4451, anthracite
Installation	Adhesive set







GREEN LEAVES, BLUE WATER, YELLOW SUNSHINE ARE THE COLOUR INSPIRATIONS FOR THE MANOLYA FABRIC AND CREATE INDOOR SPACES FOR VITALITY AND LIVELINESS.



Model	11-8220, taut
Blind fabric	MANOLYA, 3-4469, green/petrol
Installation	Window Clip



▲
MANOLYA is transparent and highlights particularly intense colours at the same time. The lively effect is achieved through fleece ribbons that have been woven into the fabric, which give the horizontal stripes a completely new character.





COLOUR GRADUATIONS ARE ONE OF THE MOST BEAUTIFUL COMPOSITIONS, TO DRAW ATTENTION TO A SPACE - VARIOS FABRIC HAS THE SAME EFFECT.

Targeted use of woven threads of differing red tones - from soft apricot and peach tones to deep Siena red - create a particular atmosphere through the harmonious colour graduations in our VARIOS pattern.



| 17



Model	11-8220, taut
Blind fabric	VARIOS, 3-4481, red tones
Installation	Window Clip

NATURAL PLAY OF LIGHT AND SHADOW ARE REFLECTED IN THE IVY PATTERN AND IMMERSES THE SPACE INTO DELIGHTFUL HARMONY.

The IVY pattern is a homage to nature and underscores a modern and natural interior design style.

18 |



Model	11-8140, free-hanging
Blind fabric	IVY, 2-4399, nature
Installation	Wall







BELA 2-4417



THE PATTERNS

MHZ developed over 60 patterns exclusively for the MHZ Pleated Blinds Collection. Designed according to the latest trends, they reflect lifestyle and interior design trends and will stand the test of time.

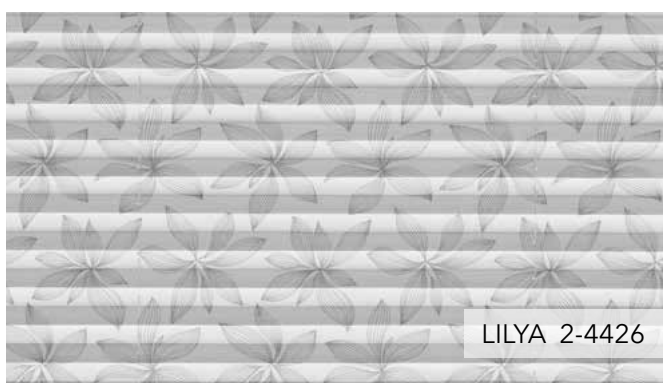
The designers were influenced by the impulses provided by their surroundings and the environment - as exhibited in the BELA pattern, which is inspired by dried elderberries.

20 |

Most patterns are available in classic tones, as well as trend colours, supplemented by a wide palette of single-coloured fabrics.

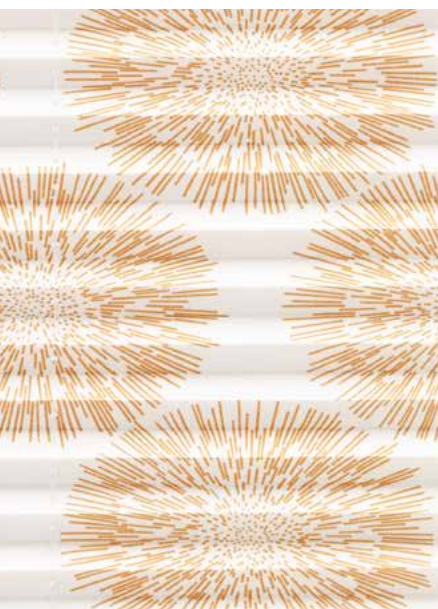


SINUS 2-4461

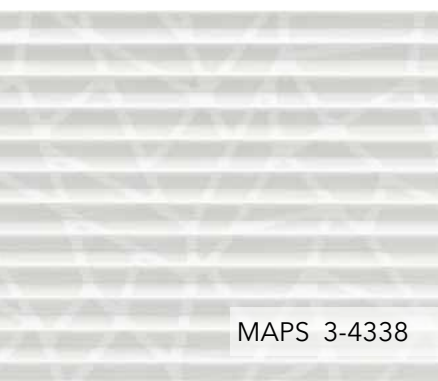


LILYA 2-4426





JOY 2-4477



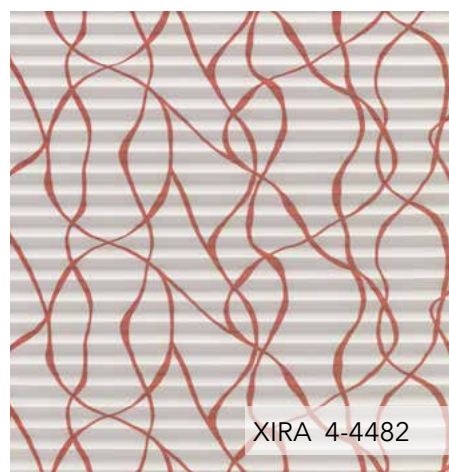
MAPS 3-4338



ROMBO 2-4488



IVY 2-4399



XIRA 4-4482



GALA 3-4434

WHEN NATURE AND FASHION MEET:
THE FLORAL PATTERN LILYA IN TRENDY
VIOLETTONES, CREATES AN ELEGANT,
FEMININE ATMOSPHERE.

The LILYA pattern in this colour graduation fills your space with a special style. Optionally, it is also available in blue and very classic grey tones.





Model	11-8220, taut
Blind fabric	LILYA, 2-4491, violet
Installation	footplate

LIVING SPACES



24 |

Model	11-8220, taut
Blind fabric	MALA, 1-4437, grey
Installation	Adhesive set

Pleated blinds are the ideal solution for people for whom harmony is important within their own four walls.

In an aesthetic manner, they block prying eyes and unattractive outward views while creating a comfortable atmosphere. Through flexible technology, the MHZ Pleated Blinds can be adjusted to meet any requirement. Be it for a living room, the kitchen or foyer.



Model	11-8140, free-hanging
Blind fabric	NOA, 3-4384, white
Installation	Ceiling

Model	11-8220, taut
Blind fabric	MERRY, 3-4457, blue tones
Installation	Window Clip



| 25

Model	11-8130, free-hanging
Blind fabric	BELA, 2-4443, grey
Installation	Wall



Model	11-8220, taut
Blind fabric	MERRY, 3-4494, violet-tones
Installation	Adhesive set

RELAX PRIVATELY - UNOBSERVED, TAKE TIME FOR YOURSELF AND BE ABLE TO ENJOY THE VIEW: THE VARO FABRIC PROTECTS AGAINST PRYING EYES AND IMMERSSES YOUR SPACE WITH SOFT LIGHT.

VARO is very natural due to its irregular appearance. The Perlex backing provides glare protection and makes the colour more intense.

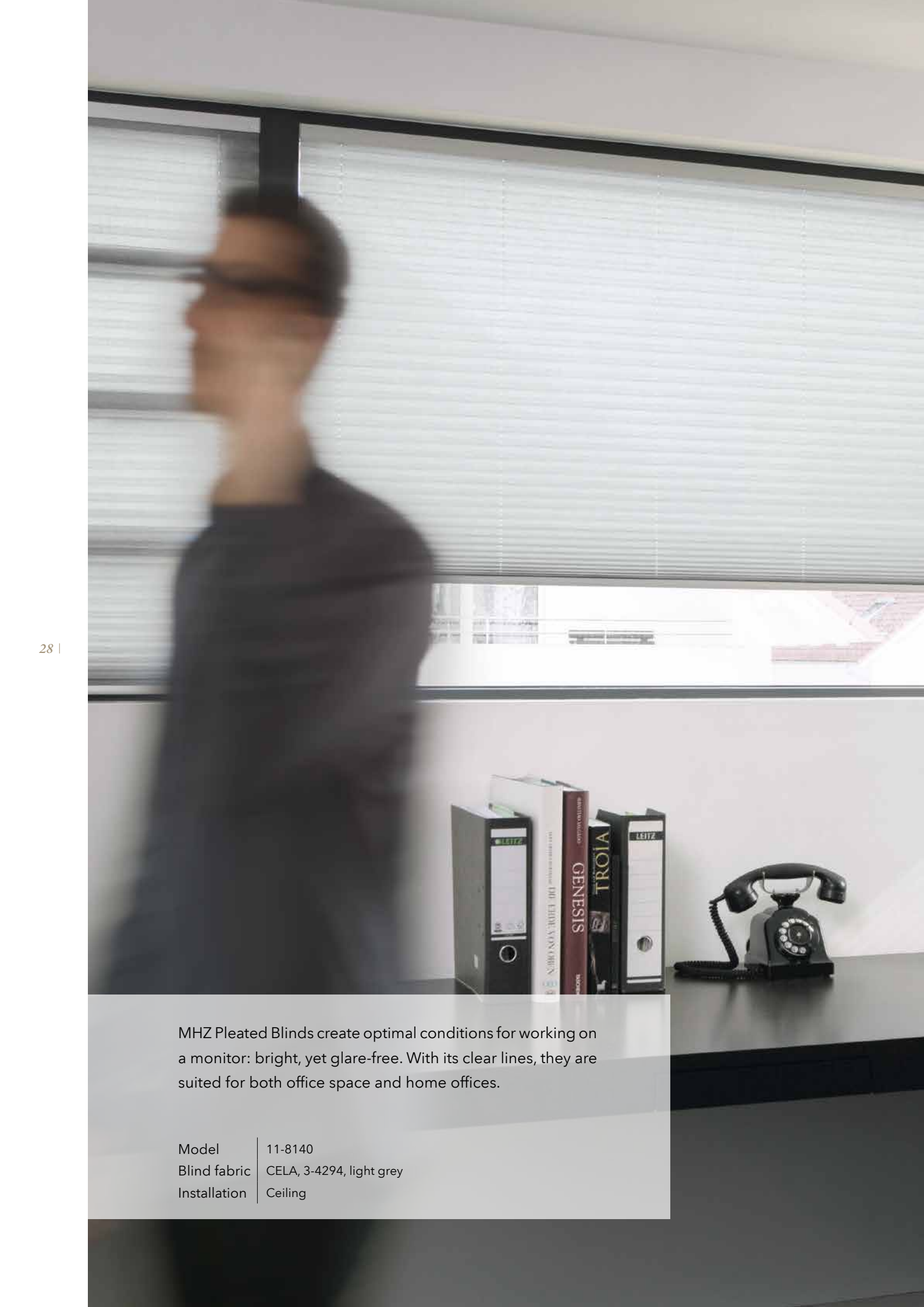
▼

26 |



Model	11-8130, free-hanging
Blind fabric	VARO, 2-4055, nature
Installation	Ceiling





MHZ Pleated Blinds create optimal conditions for working on a monitor: bright, yet glare-free. With its clear lines, they are suited for both office space and home offices.

Model	11-8140
Blind fabric	CELA, 3-4294, light grey
Installation	Ceiling







| 31

Better sleep is had in dark rooms. The white backing of the dimout fabric YOTO BO reflects the outside light extremely well. The exciting surface with its silk-matt shimmer reminds one of the finest Japanese rice paper.

Model	11-8130, free-hanging
Blind fabric	YOTO BO, 3-4512, light grey
Installation	Wall





DAY/NIGHT SYSTEMS CAN DIRECT VIEWS, CONTROL LUMINOSITY, DIM OUT LIGHT - ACCORDING TO INDIVIDUAL NEEDS - AT ANY TIME - DAY OR NIGHT.

The SINUS BO pattern and the coordinated uni-fabrics and technology are combined in the Day/Night System. Depending on your needs, you can select the functionality that will provide you with optimal lighting or darkness.



| 33



Model	11-7370, taut
Blind fabric	SINUS BO, 4-4511, TANO, 1-4181
Installation	skylight roller blinds

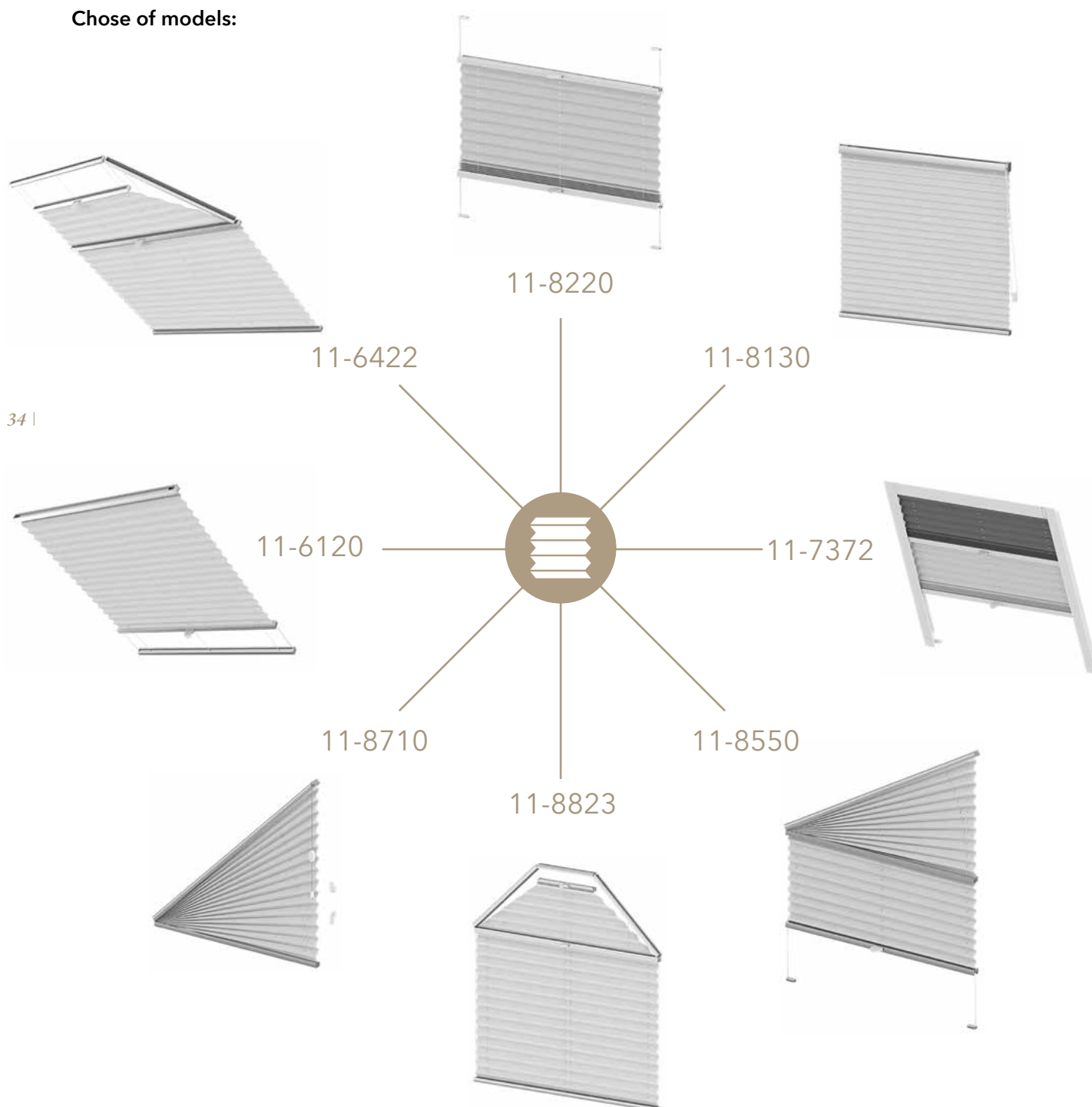
OVERVIEW MODEL OPTIONS

The right pleated blinds for each window

Windows come in a wide variety of shapes and formats. MHZ pleated blinds are the experts for all window shapes, that are incorporated into modern architecture. Made to measure to the millimetre,

technical expertise and craftsman skills come together in MHZ Pleated Blinds to create the perfect fitting product.

Chose of models:



FREELY MOVEABLE SYSTEMS

Installation options for Model 11-8220

The taut blind 11-8220 is the perfect reflection of MHZ technology. Freely movable from top and bottom, your privacy and sun protection is always where you need it to be. You can protect yourself from prying eyes and at the same time sufficient

light can flood your space coming in from above and below the hanging. Depending on your needs there are sophisticated installation options, even without having to use a drill or screws.



Installation options in the glazing bead with footplate.



Installation options with the adhesive set directly on the window pane without having to use a drill and screws and it can be removed without a trace.



Installation options on the window frame with a window clip without having to use a drill or screws.



In the case of a more narrow glazing bead (e.g. triple glazing), the glazing bead bracket can be installed onto the front of the window frame.

We will be pleased to:



FULL MHZ PRODUCT RANGE

Panel blinds, roller blinds, double roller blinds, vertical blinds, Roman blinds, pleated blinds, Venetian blinds, curtain rods, curtain rails, exterior Venetian blinds, awnings and shading systems, insect screens

Germany

MHZ Hachtel GmbH & Co. KG · Postfach 80 05 20 · D-70505 Stuttgart · Telephone 0711/9751-0 · Fax 0711/9751-411 50 · www.mbz.de

Austria

MHZ Hachtel & Co. Ges.m.b.H. · Laxenburger Str. 244 · A-1230 Vienna · Telephone 0810 95 10 05 · Fax 0800 12 12 40 · www.mbz.at

BENELUX

MHZ Hachtel S.à.r.l. · 27, rue de Steinfort · L-8366 Hagen · www.mbz.lu

Luxembourg: Téléphone + 352 31 14 21 · Télécopie +352 31 23 28

Belgium: Telefoon NL +32 2 8881649 · Telefoon FR + 32 2 8881659 · Fax NL + FR +32 78 483260

Switzerland

MHZ Hachtel & Co AG · Eichstrasse 10 · CH-8107 Buchs/Zurich · Telephone 0848 47 13 13 · Fax 0800 55 40 04 · www.mbz.ch

France

ATES-Group MHZ · 1B, rue Pégase · CS 20163 · F-67960 Entzheim · Phone + 03.88.10.16.20 · Fax 03.88.10.16.46 · www.ates-mbz.com