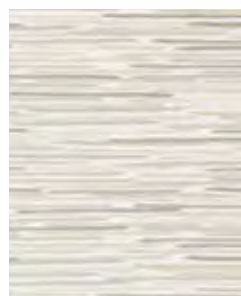
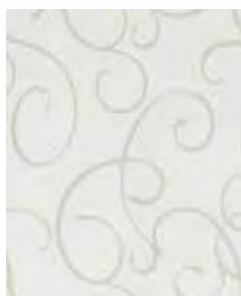
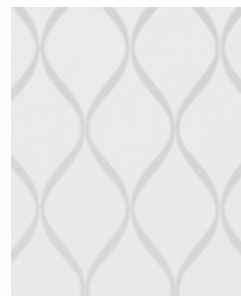
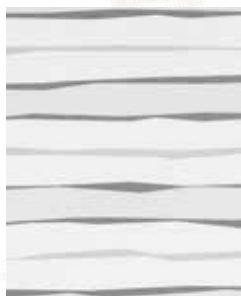
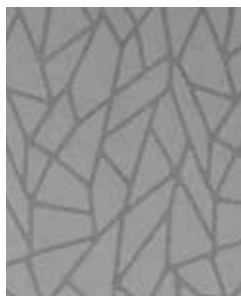
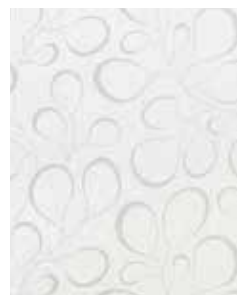


# IN SPIRA- TIONS



# IDEAS PATTERNS AND COLOURS

How is a MHZ Roller Blind Collection created?

Influences from architecture, art, fashion, lifestyle and nature are the impulses that provide the inspiration for tomorrow's trends. International trend scouts travel the globe to track these down and make them accessible.

These trends have a significant influence on our selection of roller blind fabrics. The art is found in the ability to bundle and interpret themes that fit the MHZ Roller Blind Collection.

The successful combination of tomorrow's trend with the standards of functional sun protection distinguishes the new MHZ Roller Blind Collection.

The following pages provide insight into the process of identifying the patterns and colours for our collection.

Let yourself be inspired.



Architecture



Art



Fashion

Lifestyle



Nature



Colour trends



# TRENDS THE NEW ROLLER BLIND FABRICS



The forecast for future trend colours for the MHZ Roller Blind Collection particularly addresses how different fabric effects, patterns and natural light harmonize by highlighting eye-catching, trendsetting colours.

White, off-white, all shades of grey and natural tones are very much in demand and all facets of blue to petrol are up and coming. These are juxtaposed next to desert sand inspired yellow to ochre nuances, soft to intense green variations, and sun drenched orange and red shades and sensible, powder violet tones. In addition, more technically oriented metallic surfaces play a major role.

The fact is that texture is the trend and this is being given its proper place in our current Roller Blind Collection with interesting fabric structures, such as the MHZ qualities SETH, NATHAN or Jim, a variety of transparencies such as TAURA, ELLIS or TYLER and effect threads such as RILEY or JAYDEN . Nature and architecture with their fascinating forms, structures and light reflections are always our number one provider of ideas in the development of fabrics and patterns.

Our spirited linens and stripes, graphic motifs, 3-D effects or floral patterns, that have the feel of botanical drawings, - modern, playful or puristic interpretations - tell their own stories and distinguish the uniqueness of the new MHZ Roller Blind Collection.



# WHITE SPIRIT



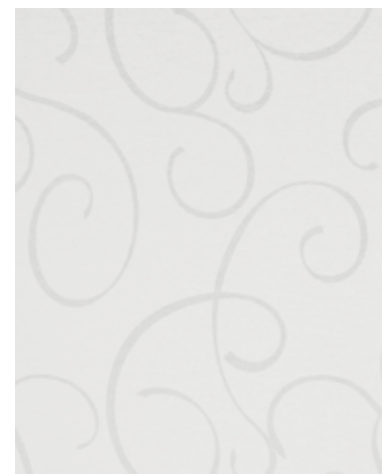
2-2111 LYLO 32 x 64 cm, Card 1



2-2112 LYN 14,7 x 16 cm, Card 1



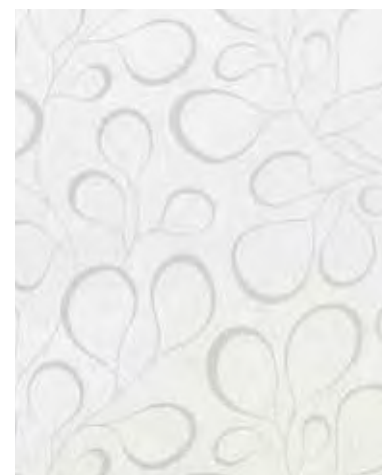
4-2619 SALPI 64 x 64 cm, Card 2



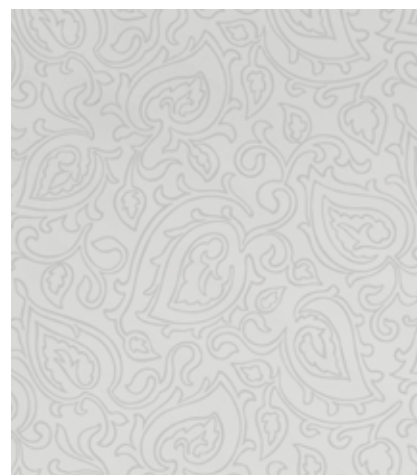
4-2456 MYA 91,4 x 91,4 cm, Card 2



2-2380 AMY 64 x 64 cm, Card 2



2-2221 DARCY 91,4 x 91,4 cm, Card 3



3-2396 WHISPER 40,3 x 91,4 cm, Card 3

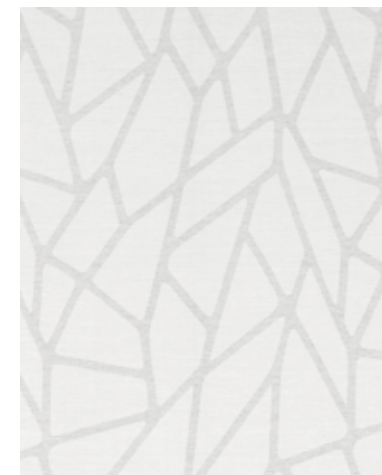


2-2477 MONA 38 x 64 cm, Card 4



2-2397 ELLY 36,7 x 45,7 cm, Card 3

White and new off-white tones focus on the essentials - on texture and pattern. Both placative, graphic, as well as sweeping, floral motifs are highlighted through the strength of white and off-white tones and provide your surroundings with a sense of authenticity.



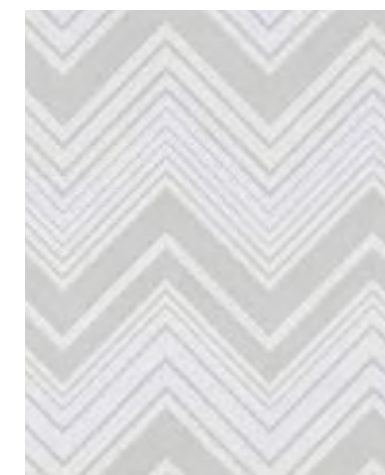
4-2419 MAPS 32,2 x 72,5 cm, Card 2



3-1638 ZIP 17,5 x 32 cm, Card 1



4-2373 XIRA 84,3 x 32 cm, Card 2



3-2503 ZOLO 31 x 69 cm, Card 1

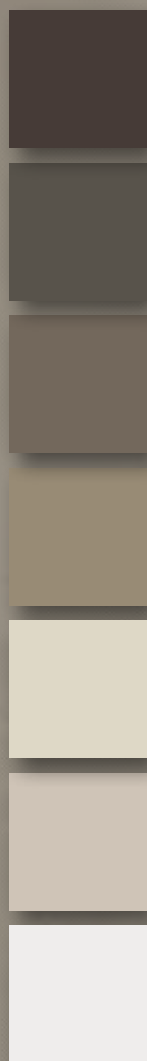




Model	BASIC
Blind fabric	ZIP, 3-1638
Colour	white







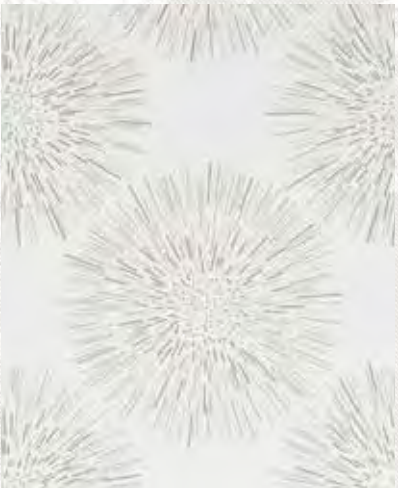
Organic contours, forms and structures of the motifs in harmonious brown and taupe tones reflect nature as a source of inspiration.



2-2246 FLIP 41,8 x 24,4 cm, Card 7



2-2381 AMY 64 x 64 cm, Card 6



2-2494 JOY 45,7 x 45,7 cm, Card 8



4-2457 MYA 91,4 x 91,4 cm, Card 6

# URBAN NATURALS



2-2103 LYLO 32 x 64 cm, Card 7



2-2104 LYN 14,7 x 16 cm, Card 7



2-2478 MONA 38 x 64 cm, Card 6

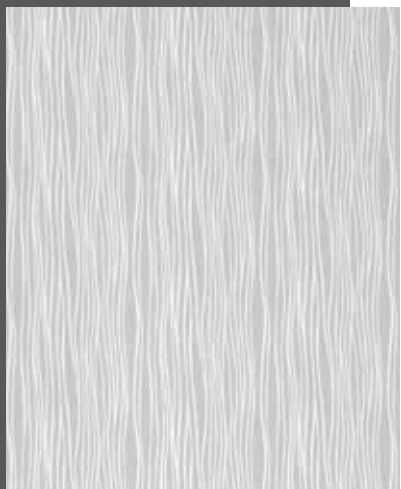




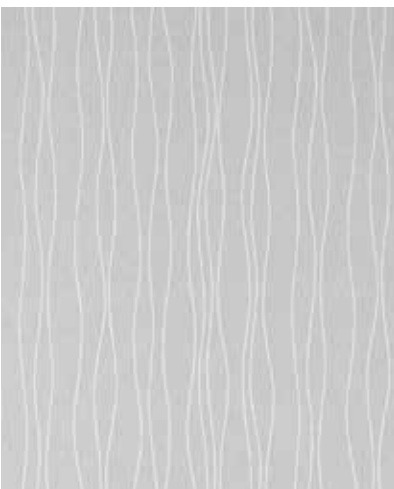


Model	BASIC
Blind fabric	ZIP, 2-2494
Colour	taupe





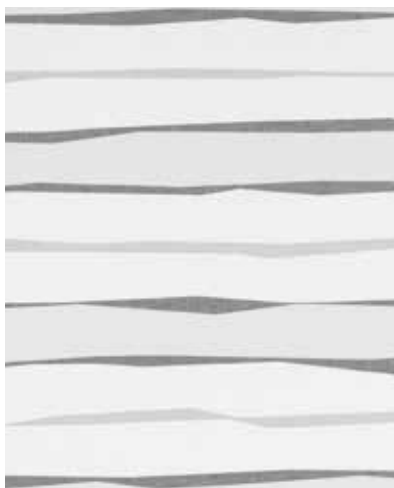
2-2114 LYN 14,7 x 16 cm, Card 9



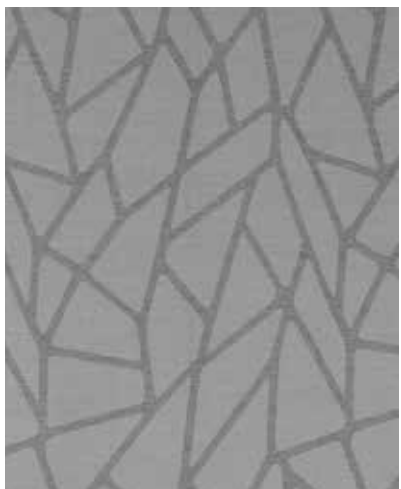
2-2116 LYLO 32 x 64 cm, Card 9



3-1639 ZIP 17,5 x 32 cm, Card 12



2-2377 PATH 60,3 x 64 cm, Card 11



4-2410 MAPS 36,2 x 72,5 cm, Card 10



2-2247 FLIP 41,8 x 24,4 cm, Card 12



# GRAPHIT GREY

Constantly changing urban worlds with experimental architecture, light piercing glass façades, distinctive masonry, multi-layered concrete surfaces and dark asphalt provide the creative input. Our exclusive MHZ patterns and uni-fabric in colours from grey to deep black are derived from this palette.



4-2458 MYA 91,4 x 91,4 cm, Card 10



2-2462 MINA 65,3 x 45,7 cm, Card 12



Model | BASIC  
Blind fabric | PATH, 2-2377  
Colour | white/grey







Merging, flowing, horizontal layers structure soft changing colour nuances in permanently changing water reflections. Manifested in the MHZ Roller Blind print patterns AMY, PATH and FLIP in blue to petrol tones.



2-2382 AMY 64 x 64 cm, Card 13



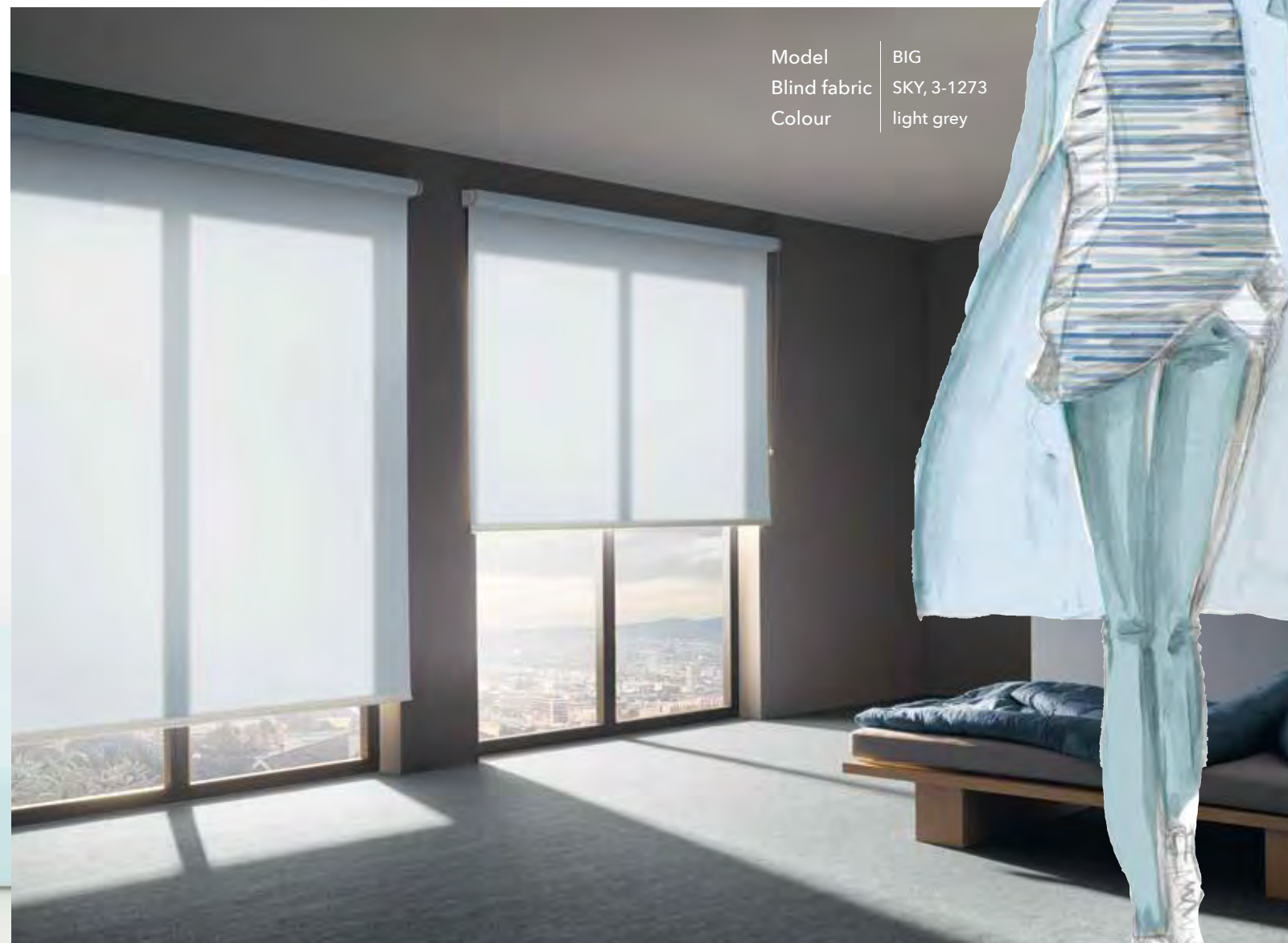
2-2378 PATH 60,3 x 64 cm, Card 13



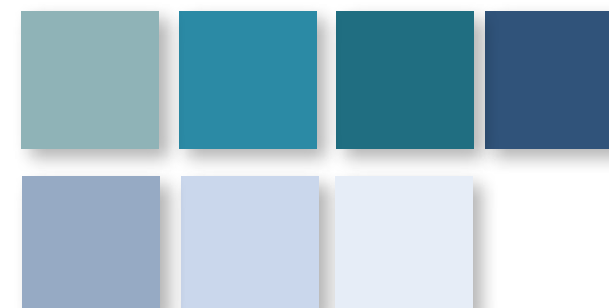
2-2398 ELLY 36,7 x 45,7 cm, Card 14



2-2248 FLIP 41,8 x 24,4 cm, Card 14

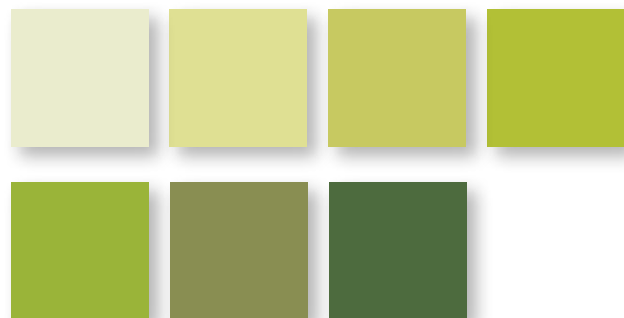


Model	BIG
Blind fabric	SKY, 3-1273
Colour	light grey





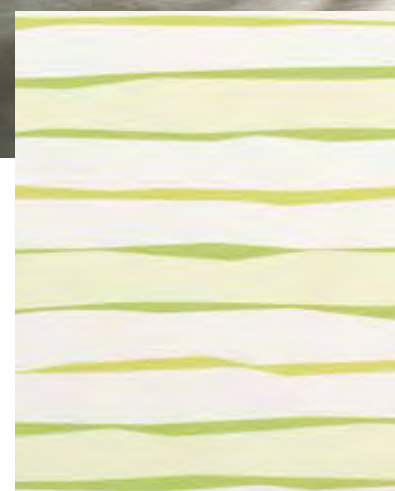
# GREEN VIEW



A collection with green in yellow to blue shades is a must have. Views of green landscapes with botanical motifs transform into new patterns, that project images of intact nature.



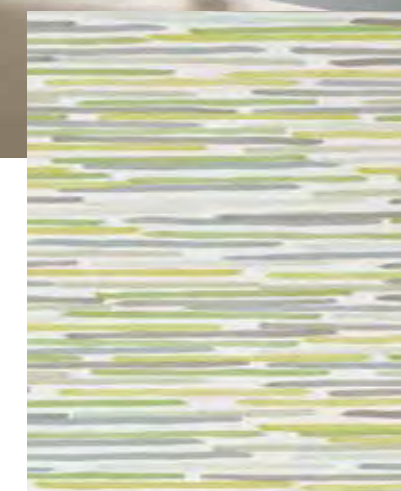
Model	BASIC
Blind fabric	MINA 2-2463
Colour	green



2-2379 PATH 60,3 x 64 cm, Card 15



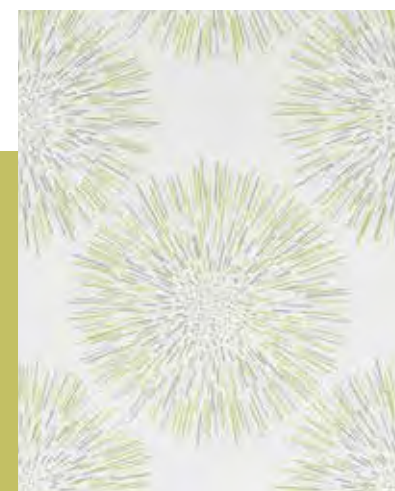
2-2463 MINA 65,3 x 45,7 cm, Card 15



2-2383 AMY 64 x 64 cm, Card 16



4-2374 XIRA 84,3 x 32 cm, Card 16

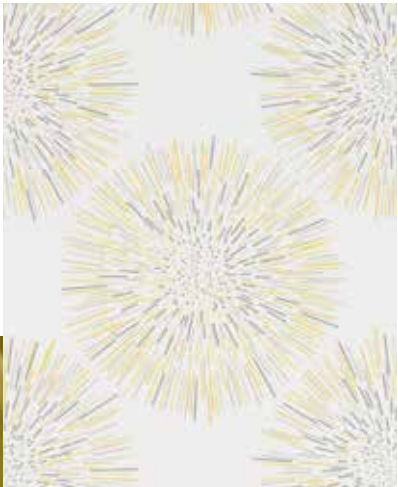


2-2495 JOY 45,7 x 45,7 cm, Card 16



# YELLOW FANCY

Unis in soft to intense summer yellow tones, but also in desert sand and spice inspired full gold and ochre tones that reflect a pure lust for life. Also the new MHZ patterns JOY and XIRA exhibit their original character in yellow.



2-2496 JOY 45,7 x 45,7 cm, Card 17



4-2375 XIRA 84,3 x 32 cm, Card 17



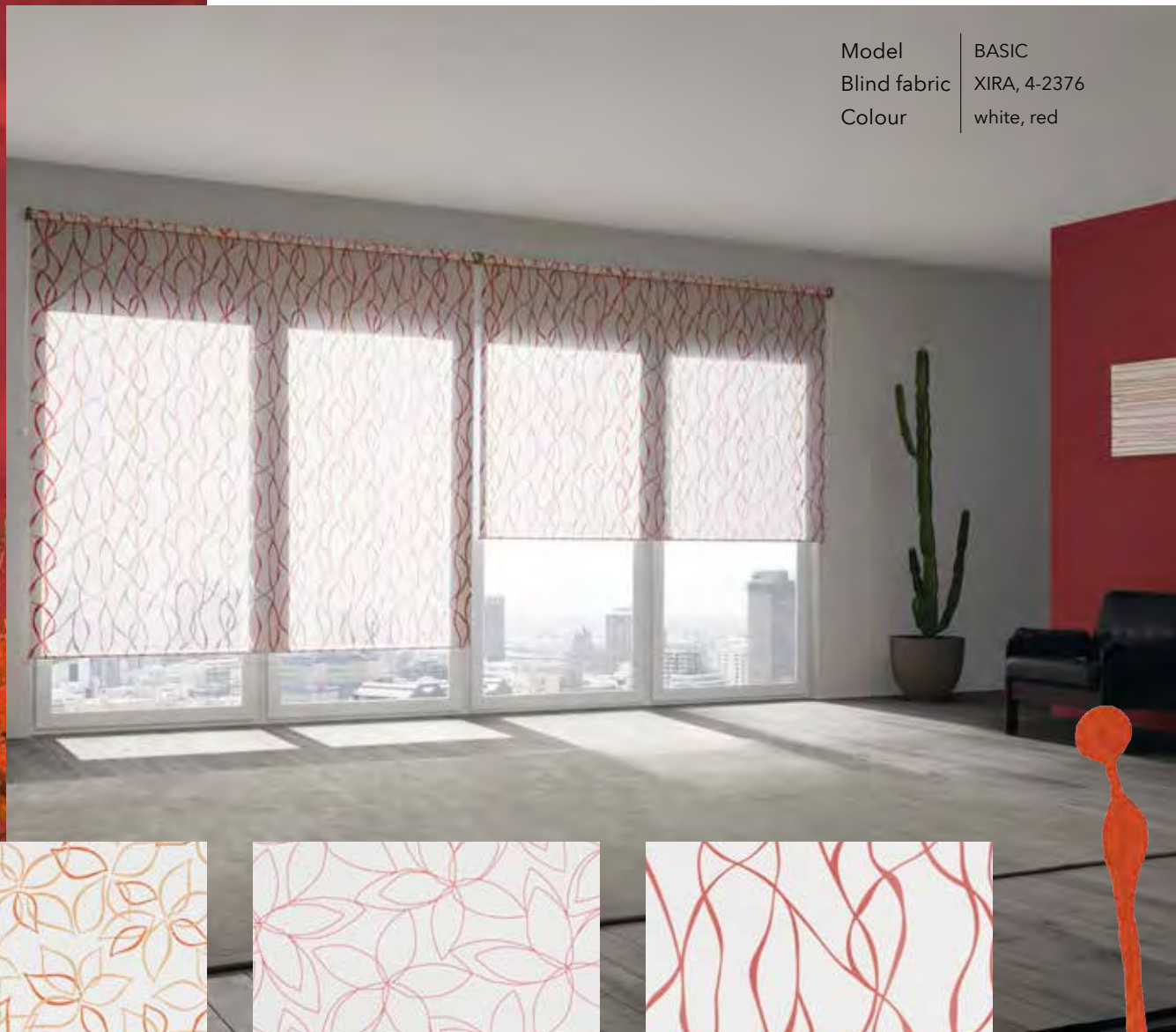
2-2475 ISA 64 x 79 cm, Card 18



Model	BASIC
Blind fabric	XIRA, 4-2375
Colour	white, yellow







Model	BASIC
Blind fabric	XIRA, 4-2376
Colour	white, red



2-2476 ISA 64 x 79 cm, Card 19



2-2479 MONA 38 x 64 cm, Card 20



4-2376 XIRA 84,3 x 32 cm, Card 20

# DYNAMIC RED

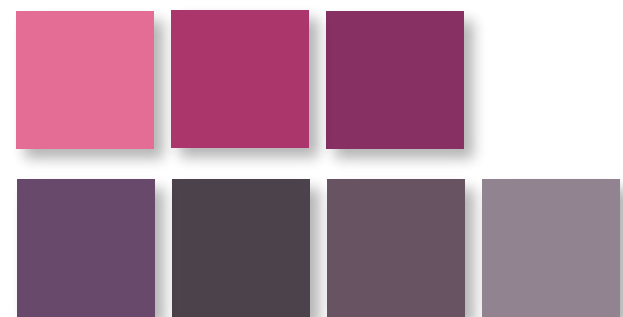
Temperamental, full orange and red tones in delicate organic forms on a white base are dynamic without being too dominating.  
The photo taken in Italy of a bizarre masonry wall with burned bricks provides the impulse for the print pattern FLIP.



2-2249 FLIP 41,8 x 24,4 cm, Card 19







# SENSUAL VIOLET

Vibrant pink and berry tones create the pattern with a young and fresh statement. Sweeping motifs in trendy powder violet and mauve tones are particularly feminine and precious.



2-2497 JOY 45,7 x 45,7 cm, Card 21



2-2384 AMY 64 x 64 cm, Card 21



2-2222 DARCY 91,4 x 91,4 cm, Card 22



2-2464 MINA 65,3 x 45,7 cm, Card 22



2-2399 ELLY 36,7 x 45,7 cm, Card 22




4-2459 MYA 91,4 x 91,4 cm, Card 22



Model	BASIC
Blind fabric	MYA, 4-2459
Colour	mauve





*A MHZ Roller Blind is distinguished not only through the appearance of its fabric - it is also always measured by its functionality.*

*Beneficial atmosphere is created through the sunlight regulating MHZ roller blind hardware.*



# FABRICS AND HARDWARE

Perfectly combined - the MHZ Roller Blind.

A MHZ Roller Blind Collection not only consists of the newest trend inspired roller blind fabrics - but it is the hardware that turns the hanging into a functional sun protection system.

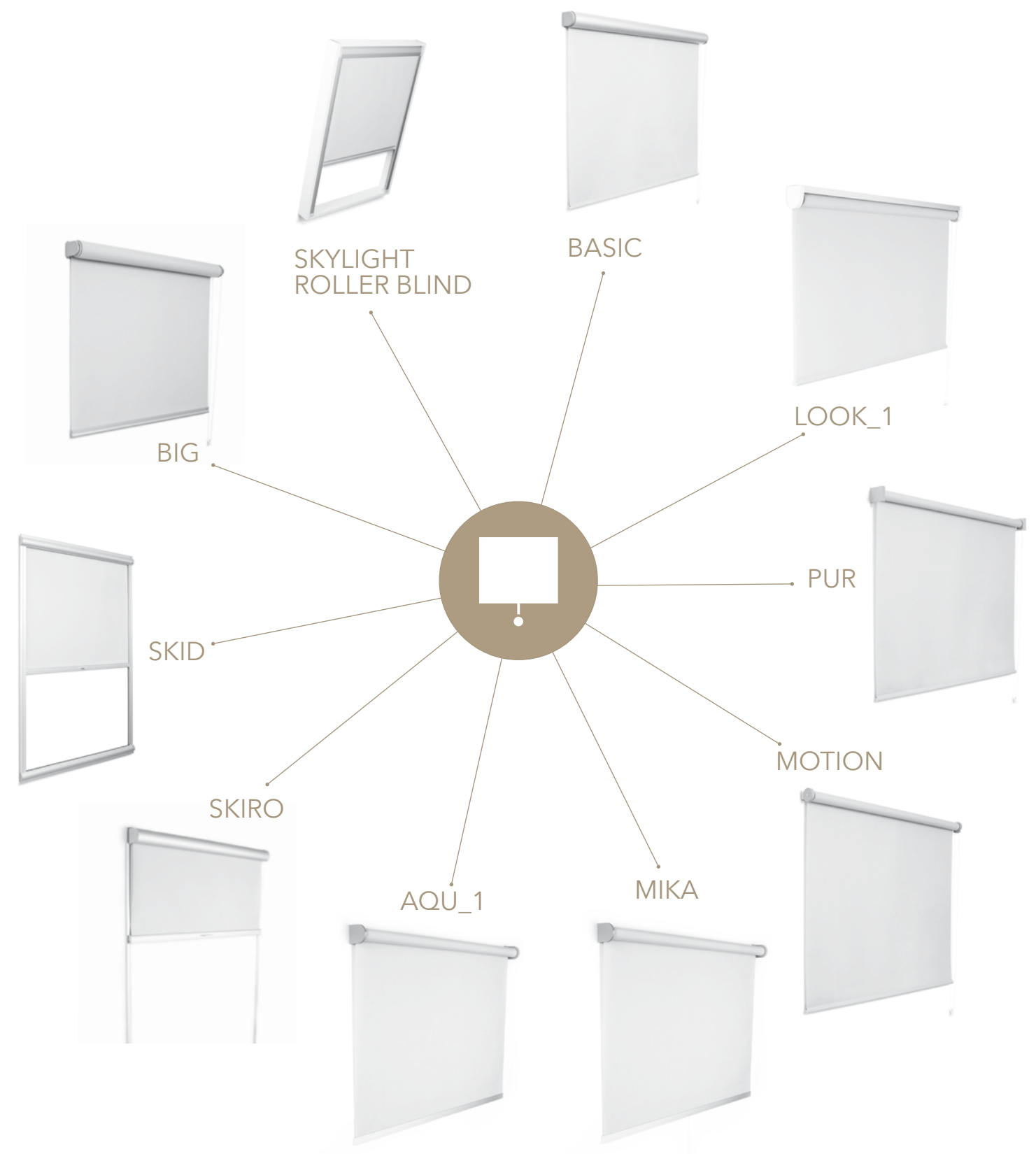
10 different roller blind hardware options, each with individual advantages and for different uses are available with our new collection.

The high quality standards of our roller blinds are a result of the manual work put into manufacturing them in our plant in Baden Württemberg. And a majority of the fabric is woven, dyed and treated in Germany.

This corresponds to the MHZ philosophy of short transport distances; strict quality control, harmlessness to health and resource efficient manufacturing.



The new MHZ Roller Blind Catalogue unifies the current trends, colours and patterns, functional themes for different uses and the documentation of the roller blind hardware in a single sample case.





We will be pleased to

